

FAST TRACK ON ENERGY COMMUNITIES



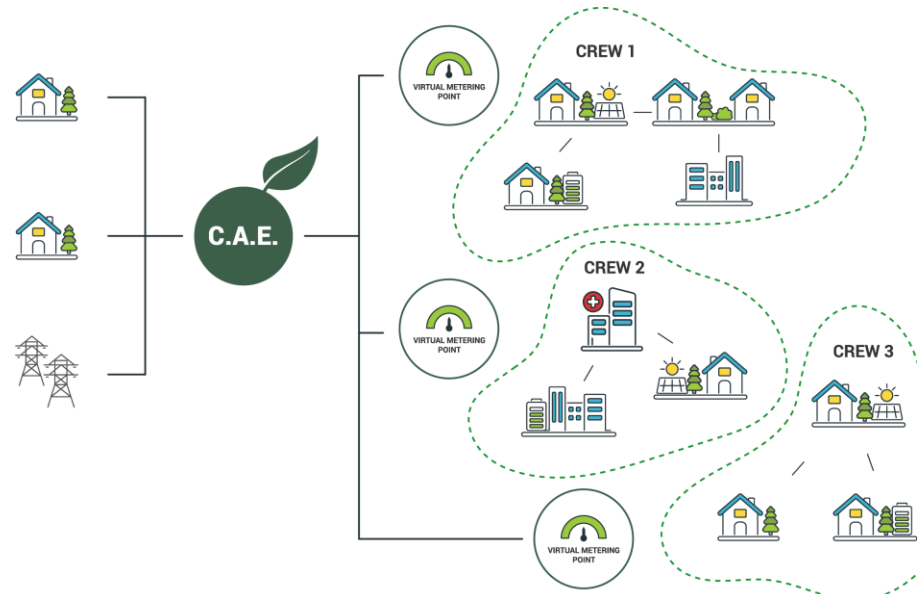
Mag.^a Katrin Burgstaller



SEP. 28 – OCT. 1, 2021 ROME, ITALY

1. Introduction

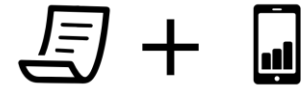
- eCREW as a third pillar of energy communities
- eCREW as a simple way to an unbureaucratic energy community via eCREW-Contract and App
- Billing and provision of the App is done by local retail energy companies which form the Community Administering Entity (CAE)
- Supporting people to use electricity efficiently on a regional basis
- CREW-members have access to useful information via App



2. Social Engagement

- eCREW is offered by local energy retailers
 - Interested customers can inform themselves about the eCREW approach
- Monetary **benefits** for both **prosumers** and **consumers** via a **split-incentives approach**
- Social engagement in a CREW is **boosted by the app**

Only a CREW-contract and the smartphone App is needed – as simple as that



eCREW **needs**:

- **No upfront investment**
- **No legal entity**
- **Contract and App**

eCREW **enables**:

- **Any size**, any form of a CREW
- **Any household** or company to participate
- **Maximizing renewables uptake** and **energy efficiency**
- **Coordination of households' cooperation via APP**



3. Results of your engagement activities

eCREW is currently in the roll-out phase of the business model in three countries

→ Spain, Turkey, Germany



→ **Field test in Germany** with “Stadtwerk Haßfurt GmbH” coming soon

- Information about eCREW has been disseminated through various communication channels of the local energy retailers
- Interested customers have been contacted
- eCREW contract has been sent out and also made available online
- Number of participants in the field test increases

4. Challenges

- REC and CEC must be established as a legal entity
 - → eCREW approach offers a simple solution for any citizen or company to join an energy community
- Communities need members
 - → with the help of local energy retailers, various interested customers can be merged into a CREW
 - → Participants without PV system or electricity storage can join
- eCREW app provides each CREW member with various information and tools to support their engagement in their group



Thank you for your attention!



Mag.ª Katrin Burgstaller

e-mail: burgstaller@energieinstitut-linz.at

phone: +43 732 2468 5668

Energieinstitut an der Johannes Kepler Universität Linz

Altenberger Straße 69

4040 Linz

Austria

www.energieinstitut-linz.at



<https://ecrew-project.eu/>



This project has received funding from the European Union's Horizon 2020 Research and Innovation Programme under Grand Agreement No 890362